



# Mini 4300 Series Industrial Inkjet Printbar System

*Enabling production-scale inkjet printing in new ways*

The Mini 4300 has speed, performance and consistency in a compact form. This enables the incorporation of digital printing into an ever-expanding number of new applications and challenging conditions for equipment integration.

**TEXT | GRAPHICS | QR CODES | BARCODES**



# THE SYSTEM

## Flexibility for a Broad Range of Markets

The Mini 4300 is configurable with one to four individually controlled printbars. The system provides single-pass printing in monochrome or process color for a wide variety of production applications, including:

- Addressing
- Coding & marking
- Serialization & package tracking
- Narrow width direct mail imprinting
- Consumer facing coding
- Variable data images
- Demonstrations
- Tickets and cards
- Short notice changes in art/imagery
- Printed electronics
- Deposition of high-value fluids
- Labels

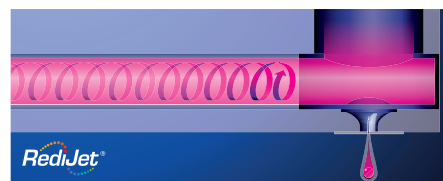


## Key points:

Single-pass  
1200 DPI  
2 bit grayscale  
Up to 1800 FPM  
Small size  
Portable  
Expandable  
CMYK  
Single or multi-lane

## Quality Technology

SAMBA® drop-on-demand printheads deposit billions of drops per second, each directed to a precise location, producing high-resolution single-pass imprints at an incredible speed. Each industrial Silicon MEMs constructed printhead has 2,048 nozzles to deliver a native 1200 DPI resolution with an ink drop size as small as 3 picoliters.



Fujifilm's patented REDIJET® recirculation system ensures printbars are quickly primed with minimal waste and improved reliability.

## Mini 4300 Printbar

Parameter	Specifications
Configurations	Roll fed, sheet fed, inline/nearline, single or multiple printheads
Resolution	Up to 1200 DPI
Dimensions	22.87 x 7.5 x 3.6 in [581 x 190.5 x 92 mm]
Productivity	Up to 1800 fpm [548 m/min]*
Print width	1.6 in [4.1 cm] per printbar
Input image file format	TIFF, PDF
Smallest font	2 pt (4 pt knockout)*
Native drop size / max drop size	2.4 or 3.5 pL / 13 pL

\*results may vary depending on application

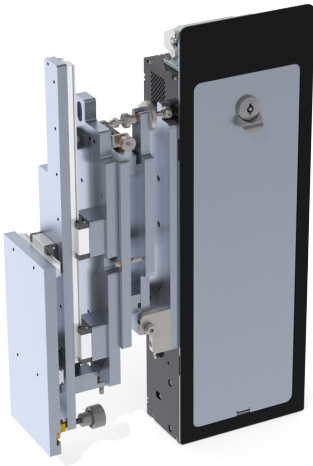
## Control Cabinet

Parameter	Specifications
Dimensions	30.1 x 8.8 x 30 in [764.7 x 223.4 x 762 mm]
Weight	86 lbs [39 kg]
Input	Universal 110–240 single phase VAC 50/60 Hz
I/O	Remote and client
Max current draw	6.3A
Max printbar support	4
Waveform	4 independent

## PC/Software

Parameter	Specifications
PC Interfaces	GUI or remote application over IP
Control system	Windows® 10 graphical user interface
Variable data	Yes

# OPTIONAL ACCESSORIES



## Head Mount

The Mini 4300 Head Mount is designed to provide an integration solution between the printbar and a transport system, while providing 5 axes of adjustment for high image quality results.

Parameter	Specifications
Material	Stainless steel, aluminum
Weight	Approximately 17 lbs [7.7 kg]
Mounting holes	M8 x 1.25 thread, 1x1 in [25.4 x 25.4 mm] square hole pattern
Yaw adjustment	± 5 degrees
Roll adjustment	± 2.5 degrees
Pitch adjustment	± 1.5 degrees
Standoff adjustment	0.75 in [19 mm]
Horizontal adjustment	12.6 in [320 mm] max



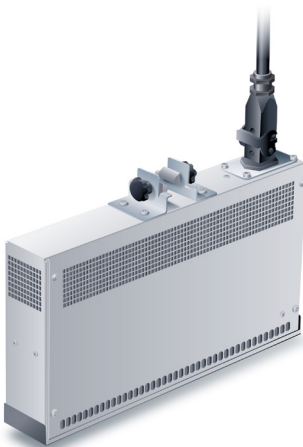
## LED Lamp

The LED lamp is used for UV/LED curable inks. Results may vary.

Parameter	Specifications
Size	3 x 3.5 x 9 in [77 x 90 x 231.3mm]
Weight	2.2 lbs [1.82 kg]
Standoff distance	0.08 in [2 mm]
Noise	54dBA @ 3.3 ft. [1 m]
Max operating temp	95°F [35°C]
Input power	120V
Input signal	Analogue or RS485

## Aqueous Dryer

The Aqueous Dryer is used for aqueous inks, organic solvents and latex. Results may vary.



Parameter	Specifications
Lamp size	14.2/20 x 0.9/2.6 x 9.3 in [362/508 x 22/67 x 237 mm]
Drying width	1.7 in [44 mm]
Lamp weight	3.7 lbs [1.7 kg]
Lamp power	Up to 3.1kW emitter
PSU input power	230VAC, 14A, 50/60 Hz*
PSU weight	4.4 lbs [2 kg]
PSU size	5 x 9.8 x 2.4 in. [128 x 250 x 60 mm]
Mount height adjustment	2.4 in [60 mm]
Mount flip-up angle	45° and 90°
Mounting holes	M8, 3.9 in [100 mm] width

\*functional at 208VAC with diminished performance

# OPTIONAL ACCESSORIES

## Roll-to-Roll Rewinder

The Roll-to-Roll Rewinder is a tabletop unit designed to support single pass inkjet technology.



Parameter	Specifications
Size	43 x 18 x 20 in [1092.2 x 457.2 x 508 mm]
Weight	250 lbs [113.4 kg]
Max substrate roll diameter	12 in [304.8 mm]
Max substrate roll width	6 in [152.4 mm]
Substrate roll core diameter	3 in [76.2 mm]
Core locking	Manual
Speed	35 – 500 feet per minute [10.7 – 152.4 meters per minute]
Unit control	Manual through local HMI touch screen
Auto tension control	Yes
Tension control method	Pneumatic brake
Substrate break detection	Yes
End of substrate notification	Yes
E-stop	Yes
Encoder mounting bracket	Yes
Mounting plate	M8 x 1.25 thread, 1x1 in [25.4 x 25.4 mm] square hole pattern
Substrate elevation	Even with top mounting plate
Input power	230 VAC, Single phase, 50/60 Hz

# SERVICE, SUPPORT & ENGINEERING



## Work with us

Working with FUJIFILM Integrated Inkjet Solutions gives you direct access to the leading experts in inkjet technology. Our engineering team ensures your system is tuned for your application by optimizing waveform performance, ink formulation, and production workflow.

## Brought to you by FUJIFILM

Fujifilm is a technology provider you can trust who will be with you over the long term. Since its establishment in 1934 as Japan's pioneering photographic filmmaker, Fujifilm has leveraged its imaging and information technologies to become a global presence with over 70,000 employees, and with a reputation for innovation in imaging solutions, healthcare, high-performance materials, graphic systems, recording media, and industrial products.



# FUJIFILM

Email: [FIIS@fujifilm.com](mailto:FIIS@fujifilm.com) • <https://inkjet-integration.fujifilm.com/>

FUJIFILM and the FUJIFILM logo, REDIJET and the REDIJET logo, and SAMBA are trademarks of FUJIFILM Corporation and its affiliates. © 2022 FUJIFILM, Inc. All rights reserved.

PDS00118 Rev. 11 3/24/2022